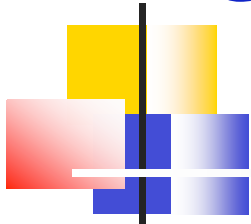
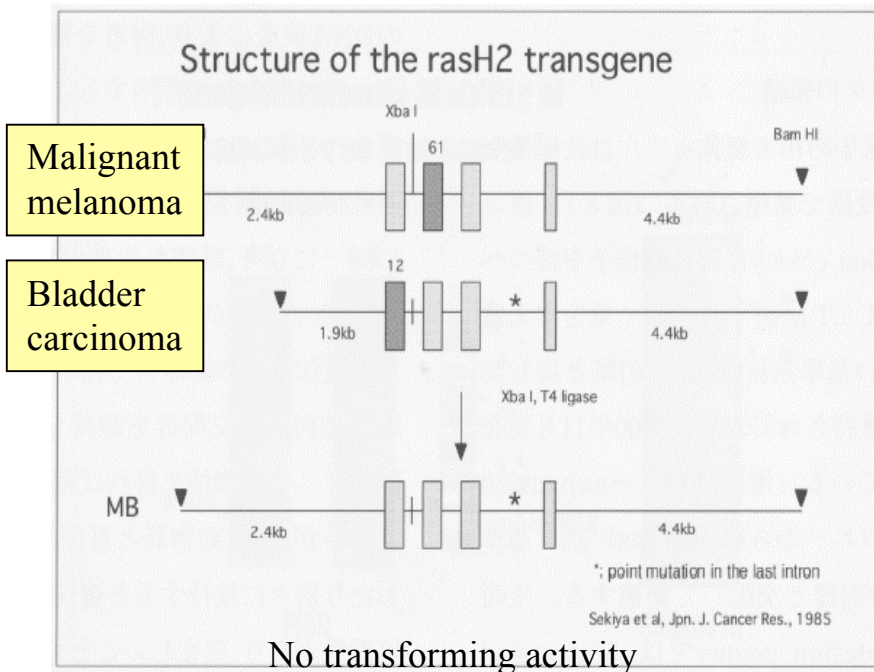


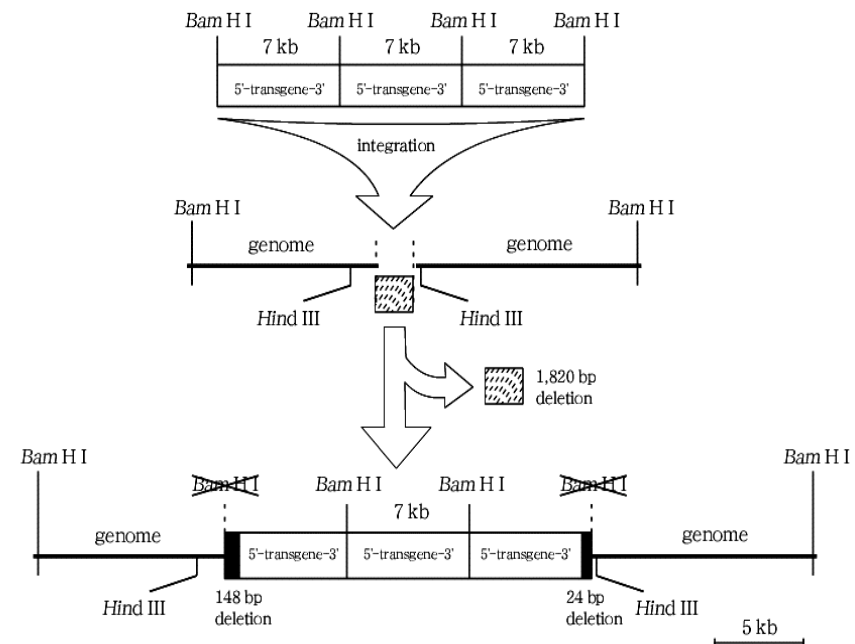
Genetic characteristics of rasH2 mice



- Human prototype *c-Ha-ras* gene
- 3 copies of the transgene were integrated in tandem array



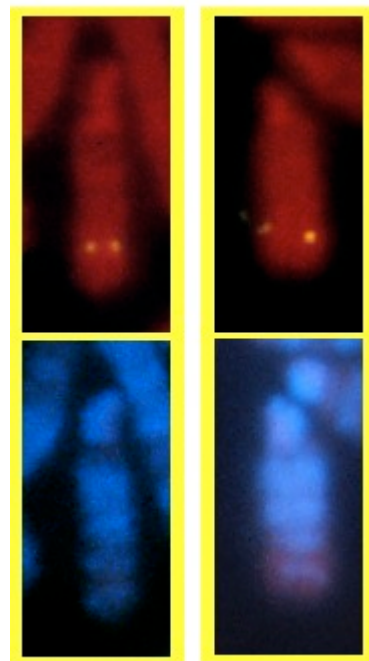
Structure of integrated human *c-Ha-ras* transgene in Tg-rasH2 mouse



Genetic characteristics of rasH2 mice



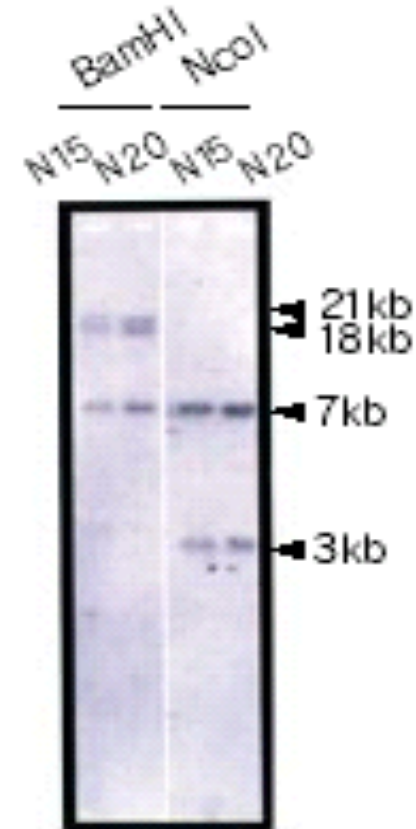
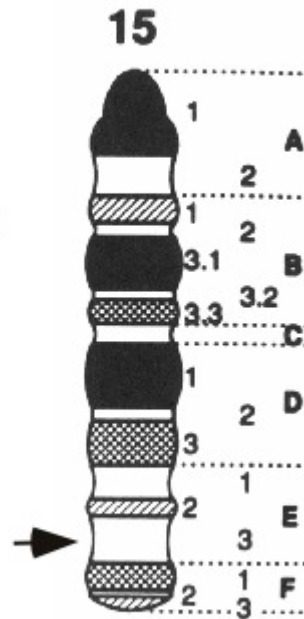
Chromosome 15E3



N15

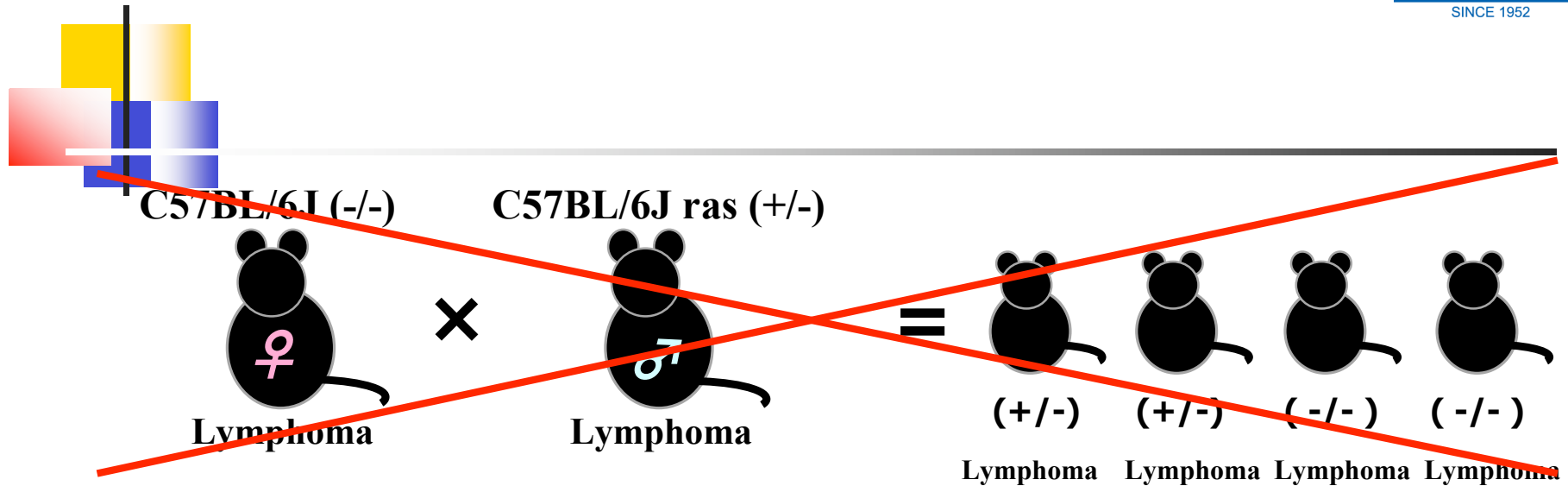
N20

FISH



Southern

rasH2 mice : ♀ BALB/cByJ x ♂ C57BL/6J-TgrasH2



To be achieved wide-ranging carcinogenesis

